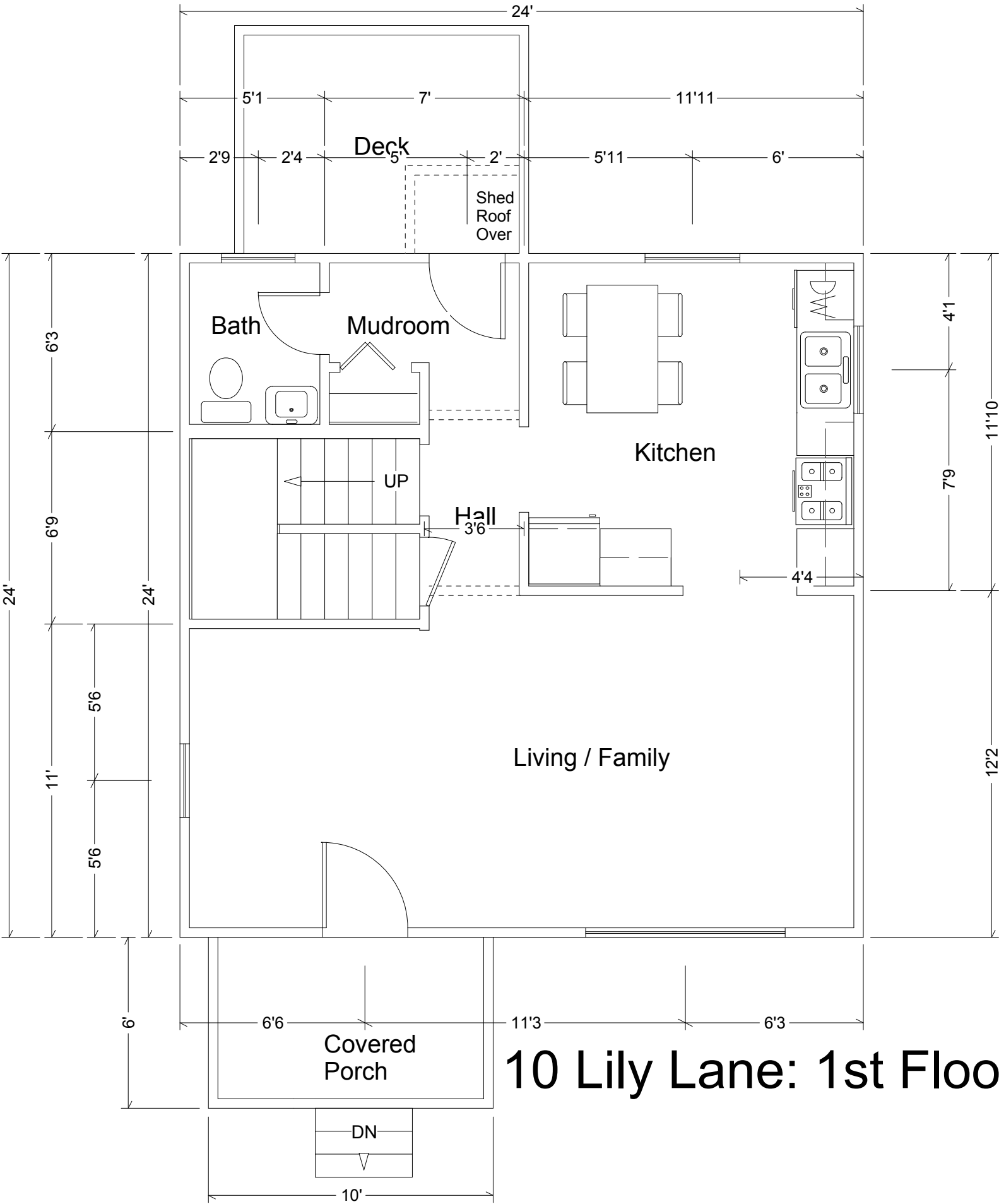


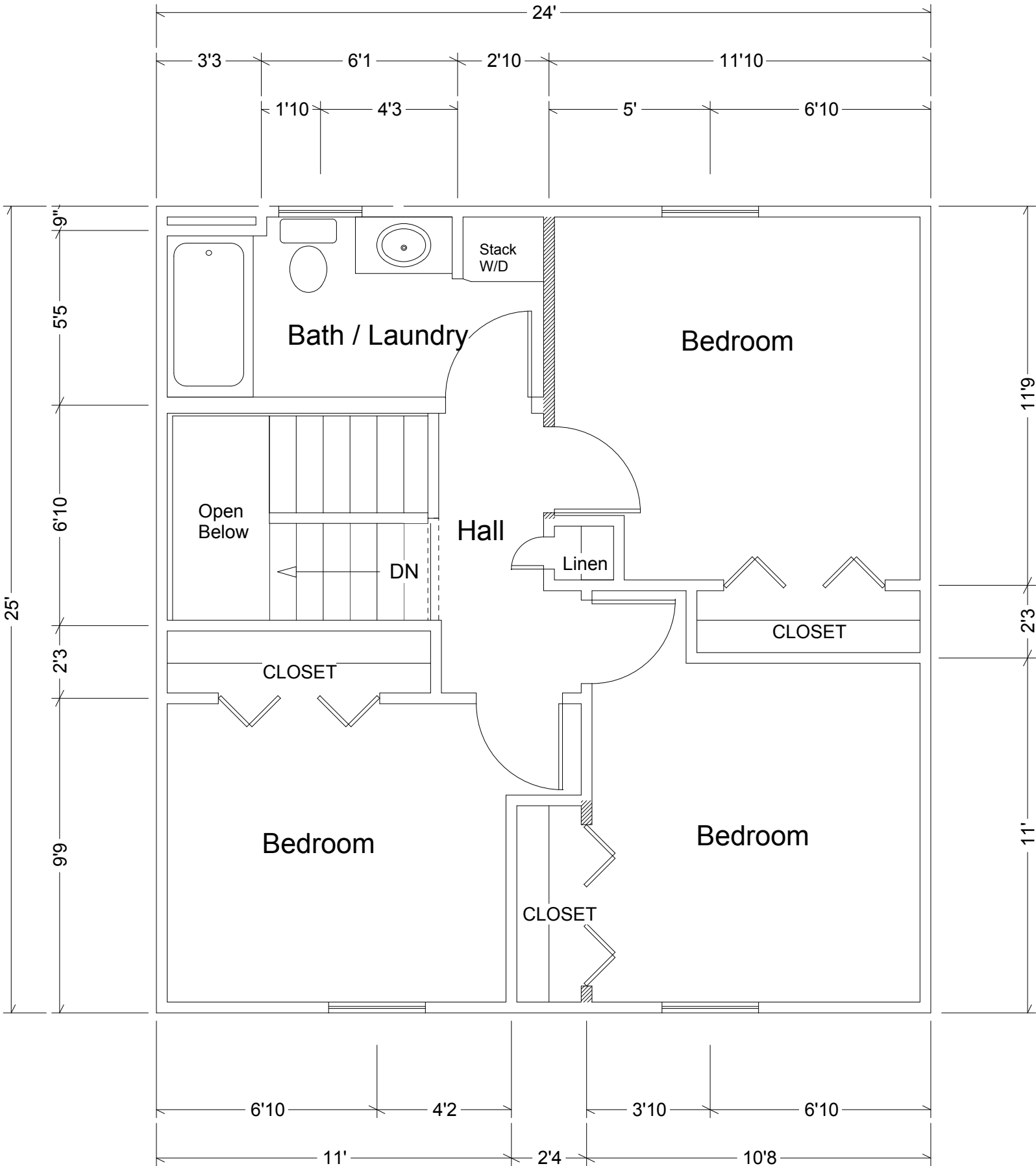
Kirby Cottages ~ 10 Lily Lane



Offered at \$234,800 with 3% buyer credit
To be completed August 2010







10 Lily Lane: 2nd Floor

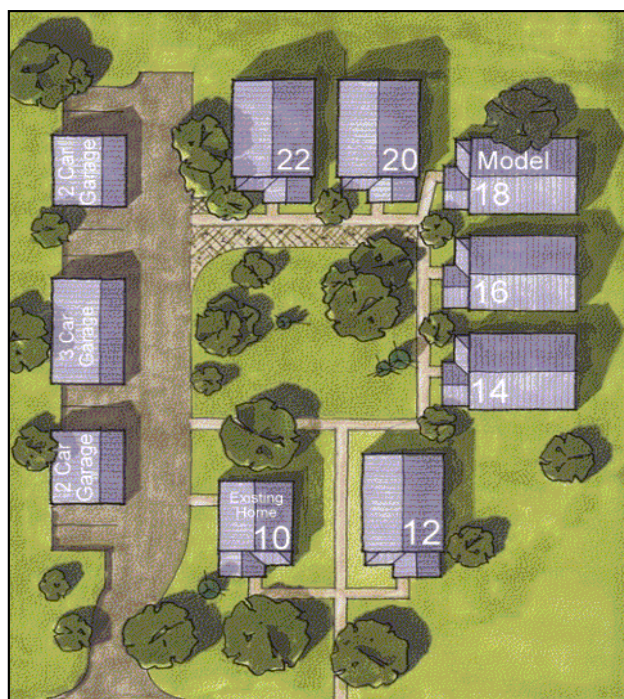
Kirby Cottages Price List

July, 2010

South Burlington, Vermont						Square Footage				Basement?			
Address	Status	Site Location	List Price	BR	Baths	Total Finished	1st	2nd	Bsmt Finished	Type	Deed Restricted?	House Style / Options Assumed	
22 Lily Lane	AVAILABLE	Rear	\$ 289,900	3+den	2	1,788	756	600	432	Yes	Walkout	No	1 1/2 story cottage with dormer. Finished walkout basement & deck. Custom floorplans available.
20 Lily Lane	SOLD!	Rear	\$ -	3	2	1,632	756	504	372	Yes	Walkout	No	1 1/2 story + Finished walkout basement with deck
18 Lily Lane	SOLD!	Corner	\$ -	2	2	1,260	756	504	-	Yes	Lookout	Yes	1 1/2 Story Cottage / unfinished lookout basement
16 Lily Lane	SOLD!	Side	\$ -	2	1.5	1,260	756	504	-	Yes	Egress	No	1 1/2 Story Cottage / finished egress basement
14 Lily Lane	SOLD!	Side	\$ -	2	2	1,260	756	504	-	Yes	Egress	No	1 1/2 Story Cottage / unfinished egress basement
12 Lily Lane	SOLD!	Front	\$ -	2	1.5	1,144	624	520	-	Yes	Egress	Yes	One Story Cottage; 2 br + storage loft
10 Lily Lane	AVAILABLE	Front/ Existing	\$ 234,800	3	1.5	1,176	576	600	No	Yes	Standard	Yes	Existing Home; gut/rehab complete for August 2010 occupancy)

Kirby Cottages is a planned residential development of single family homes. Each homesite can be customized with a variety of floorplans and options.

Prices assume finish choices and options that may be modified and are subject to change at any time in developer's sole discretion. Contact us for details.



For more information, please visit our website at

www.KirbyCottages.com

or contact
Bill Niquette

bill@kirbycottages.com
(802) 338-5552

© 2010 Kirby Road Partners LLC All rights reserved.